

CRYSTAL CLEAR IMAGE  
INTRAORAL SENSOR

Ray



RIO Sensor+



FACE FOWARD,

INVITES

DENTAL PROFESSIONALS

TO EXPERIENCE

# Diagnostic excellence

Radiographs are the starting point for any diagnosis, meaning your sensor has much to live up to. It should produce accurate images that allow you to diagnose confidently while simplifying the acquisition process and not complicating your workflow. Additionally, it should be comfortable for patients to tolerate the imaging experience. RIOSensor+ is up to these challenges, providing exceptional diagnostic power and workflow efficiencies.



## Exceptional image quality

- 24 lp/mm true resolution

## Design for durability

- Reinforced casing to resist shock
- Fiber optics protect the detector from X-ray
- Reinforced cable connection points

## Reliable waterproof

- Fully waterproof sensor supports immersion in disinfecting solution for enhanced hygiene and safety

## Imaging processing tools

- Pre-programmed anatomic enhancements
- Endo, perio and DEJ filters
- Optimize image contrast according to diagnostic

## Improved ergonomics

- Cable wires are lined with Teflon to reduce friction
- Flexible wire combined with smaller cable housing has significant ergonomic benefit

## Enhanced workflow

- TWAIN compatible
- Integration with leading DPMS software





# Exceptional image quality

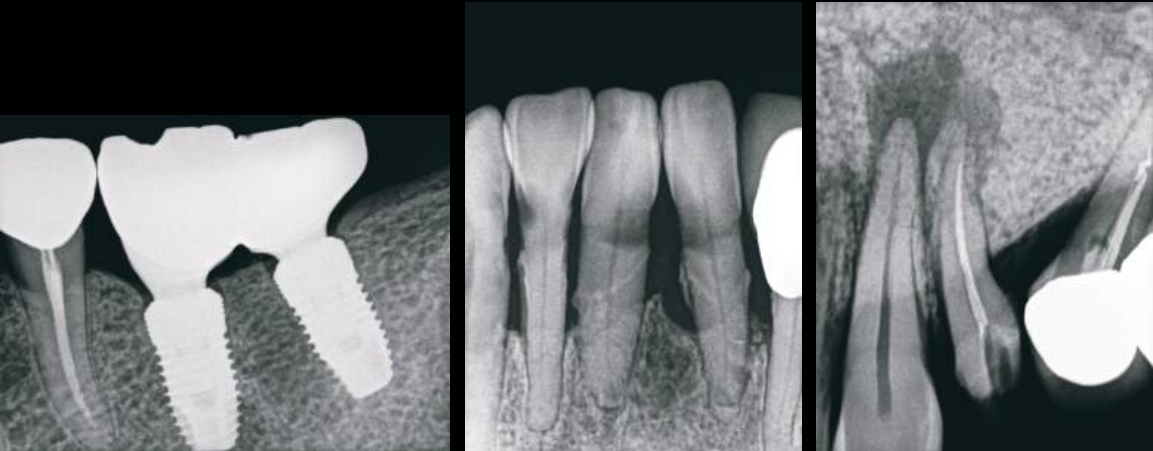
Between theoretical resolution and true resolution, the most crucial thing in diagnosis is the true resolution. Riosensor+ provides a high true resolution of 24 lp/mm with maximum diagnostic precision and produces exceptionally detailed, crystal-clear images. RIOSensor+ also improves your diagnostic confidence.

True  
Resolution  
24 lp/mm



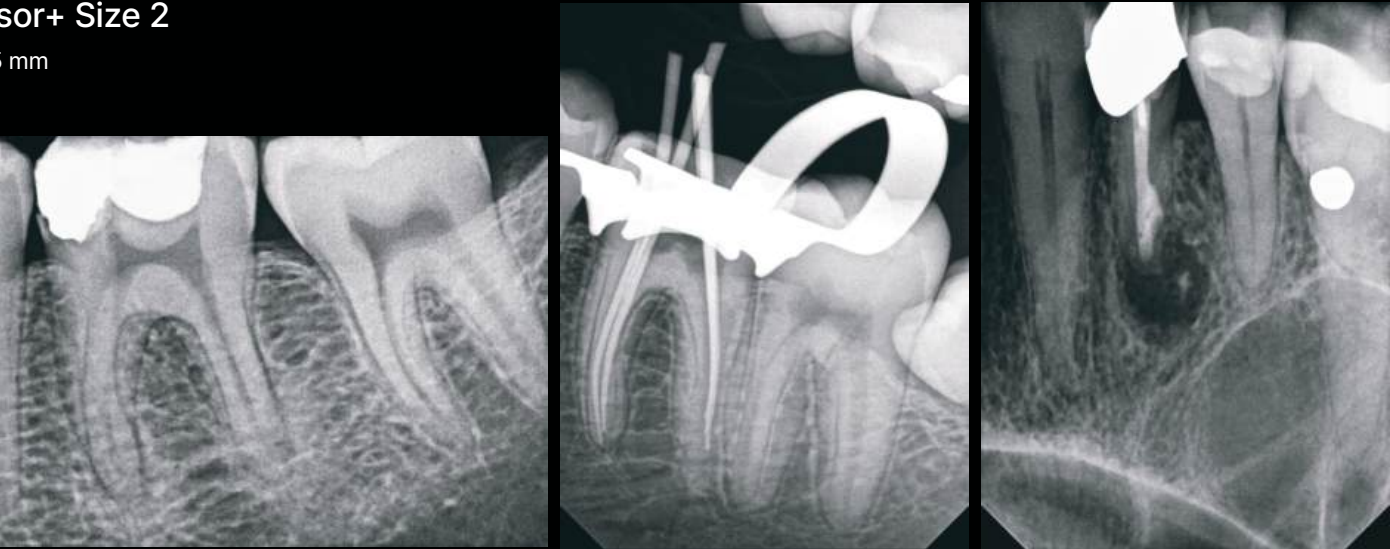
RIOSensor+ Size 1

22.2 × 29.6 mm



RIOSensor+ Size 2

26.6 × 35.5 mm



# Optimized imaging processing tools

With the RIOSensor+, your ideal image is just a few clicks away. You can apply three anatomical image enhancement modes to your acquired images: endodontic, periodontic, and dentin-enamel junction.



## Anatomical mode and sharpness level

3 type mode



Endodontic



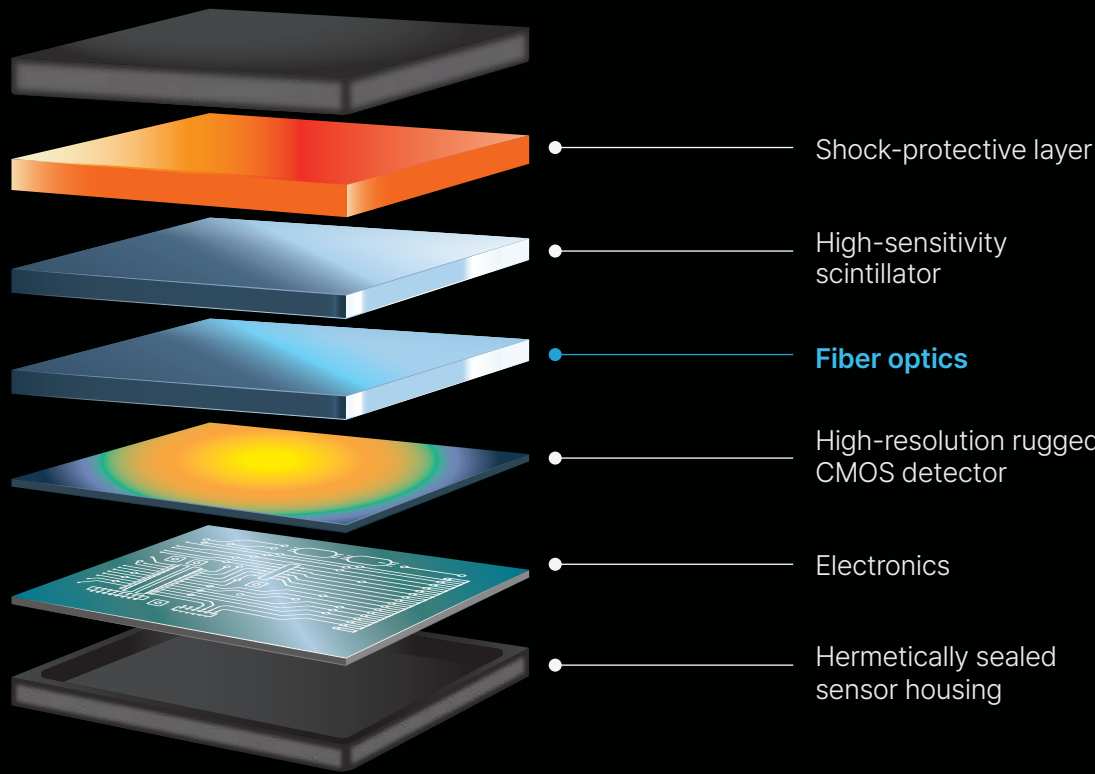
Periodontal



DEJunction

# Design for durability

RIOSensor+ has built-in parts for strength. It is resistant to impact, bite, and fall by reinforcing cases that are resistant to impact. The fiber optic part protects the detector from X-rays and is safe for unlimited sensor exposure. RIOSensor+ also has powerful long-term hardware and flexible cables that can withstand tens of thousands of tasks and can be used intensively for over a decade.



# Improved ergonomics

The newly designed cable prioritizes the patient's usability by incorporating a Teflon lining to decrease friction. The cable thickness has been optimized for flexibility and reduced diameter by using an alloy mesh cable shielding material.



More compact



Rounded corners



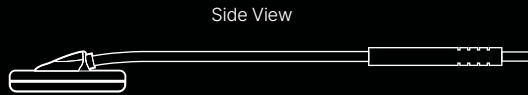
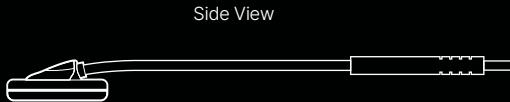
20% Thinner cable

## Specification

	RIOSensor+ Size 1
Technology	CMOS + Scintillator + Optical Fiber
Pixel dimension	19 microns
True (measured) Resolution	24 lp/mm
Active area	22.2 × 29.6 mm
Overall dimensions	27.6 × 37.7 mm
Sensor plate thickness	7.3 mm
Gray Scale	4096 grey levels (12 bits)
Input voltage (from USB interface)	5V

	RIOSensor+ Size 2
Technology	CMOS + Scintillator + Optical Fiber
Pixel dimension	19 microns
True (measured) Resolution	24 lp/mm
Active area	26.6 × 35.5 mm
Overall dimensions	32.2 × 44.2 mm
Sensor plate thickness	7.3 mm
Gray Scale	4096 grey levels (12 bits)
Input voltage (from USB interface)	5V

## Dimension





HQ. Twosun world BLDG 12F, 221, Pangyoyeok-ro,  
Bundang-gu, Seongnam-si, 13494, South Korea  
tel. +82. 031. 605. 1000 email ray\_sales@raymedical.co.kr  
[www.raymedical.com](http://www.raymedical.com)