

Ray

RAYiOS

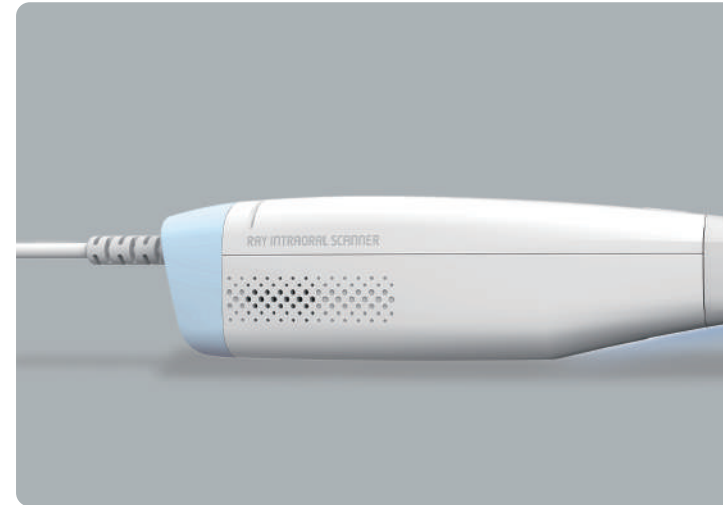
INTRAORAL SCANNER



# The First Move into Digital Dentistry, RAYiOS

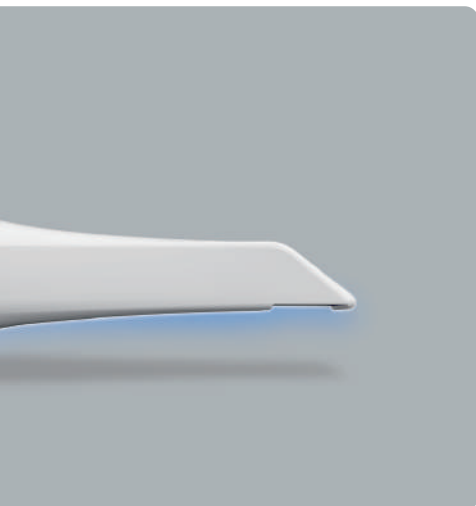
Scan  
Start/Stop

Scanner  
Status LED



Anti-fog





## HIGH USABILITY

### ① Open System

It supports an open type file format that is compatible with any device and allows collaboration with dental labs and other partners.

### ② Ergonomic Design

Stable center of gravity design and grip feeling for user consideration make scanning more comfortable.

### ③ No Powder

You can scan comfortably without powder.

## PRECISE EXPRESSION

### ① Full Color

It provides a real color scan that can distinguish between teeth and soft tissue in the mouth.

### ② HD Scanning

High-definition 3D scanning technology is applied to show even the details of margin lines.

### ③ Accurate Scanning

The advanced technology enables precise scanning.

# For your Best Digital Experience, RAYiOS

## Accurate Scanning

For best result, precision is a top priority from scanning to design and milling.

## Fast Processing

Save time for patients and staff with ONE-DAY treatment.

## High Compatibility

Introduce digital treatment with advanced imaging systems and equipments designed for dental clinics and labs.



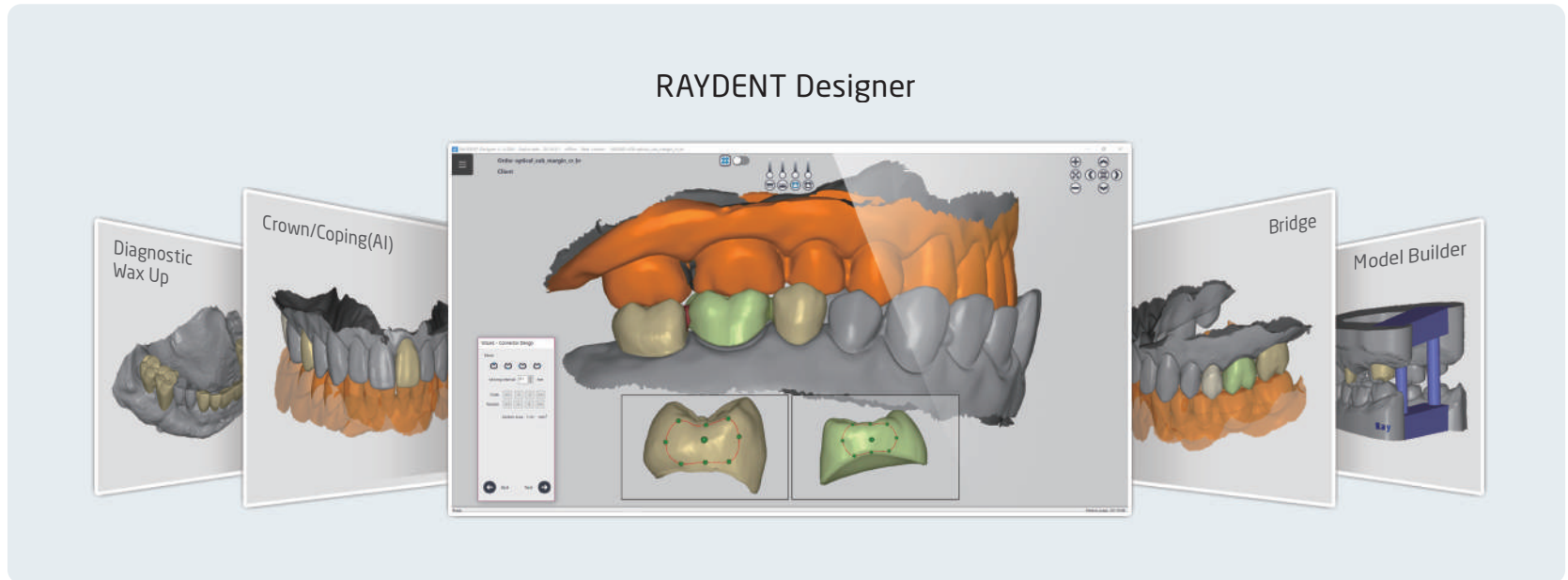
Cradle



Calibration Kit

# RAYDENT Designer

Using Ray CAD Software, optimized for chairside solution, makes a digital treatment plan more simple and easier.



## Easy & Fast Patient-Tailored Tooth Design

It is easy to design all kind of tooth shapes such as incisor, premolar and molar.

## Manual/Automatic Occlusal Adjustment

Occlusal adjustment is available manually or automatically at user's convenience.

## Seamless Workflow

It works smoothly with various CAM systems, including 3D Printer and Milling Machine.

## Various Prosthetic Design

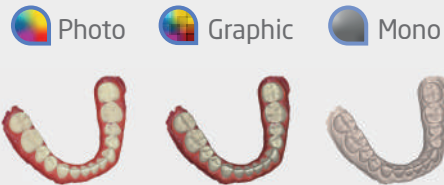
RAYDENT Designer provides various design functions including Crown, Bridge, Inlay/Onlay, Provisional Crown & Bridge, Veneer, Coping, Diagnostic wax up and Model Builder.

# Expand Realm of Treatment Possibilities with RAYiOS



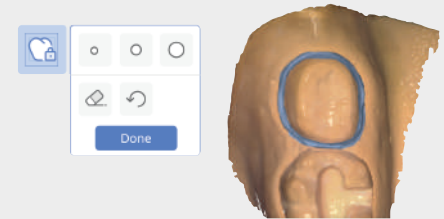
## Snapshot & Camera

You can use the snapshot and photo functions to store data and send it to where you need it. This can be useful for patient counseling and charting.



## Color mode

By selecting various color modes (Photo, Graphic, Mono), you can check the image of the scanned data more clearly and accurately.



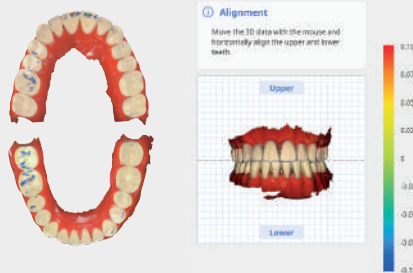
## Lock surface

Use when data in a selected area needs to be preserved so that it is not affected by further scans by locking the selected area through the lock surface function.



## Trim

You can modify the scan data quickly and easily.



## Bite Analysis

Analyze occlusions using scan data.



## Implant

Scan body and Scan post for implant treatment can be scanned.

## Specifications

<b>Field of View</b>	14 x 14 mm
<b>Depth of Field</b>	16 mm
<b>Accuracy</b>	20 um ( Single Crown )
<b>Scanning Method</b>	Digital structured light projection
<b>Acquisition</b>	Realtime video process scanning
<b>Weight</b>	280 g ( Only handpiece weight )
<b>Dimensions</b>	263.5 x 43 x 49.4 mm
<b>Tip ( Autoclavable )</b>	Autoclave 100 times

## PC Requirements

<b>CPU</b>	Intel Core i9-11900H
<b>RAM</b>	32 GB
<b>GPU</b>	NVIDIA GeForce RTX 3070 8 GB
<b>OS</b>	Windows 10 Pro 64 bit





**Ray co.,Ltd.**

HQ. Two Sun World Building 12th Floor 221, Pangyoyeok-ro  
Seongnam-si, 13494 South Korea

Tel. +82.031.605.1000 Email. ray\_sales@raymedical.co.kr

**[www.raymedical.com](http://www.raymedical.com)**

Design and specifications are subject to change without notice.

Scan QR Code  
RAY Informarion

