

RAYSCAN α

CLARITY MEETS SIMPLICITY



Clear
Panorama



Intuitive
User Interface



Unique Wireless
Remote Control



Optional
Ceph Modality



24/7 Monitoring
System

IDEA Bronze

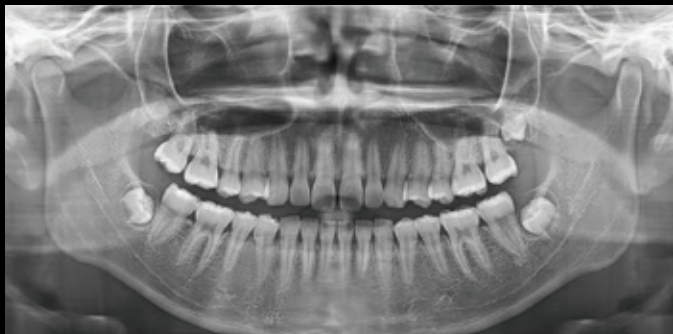


REDDOT Winner



Ray

Clarity Meets Simplicity



Clear Panorama

In AMF (Adaptive Moving Focus) technology, the optimal image layer is selected to ensure clear panoramic images, making identifying the patient's periodontal condition and lesions easier.



Intuitive User Interface

Easy-to-use user interfaces provide intuitive imaging workflows. On the main display, you can select from a variety of scan modes: standard, tooth/full mode segmentation, bitewing, orthogonal, sinus, and TMJ.

Unique Wireless Remote Control

Remote control empowers patients and healthcare professionals with Streamlined operations, focusing on treatment outcomes.

Optional Ceph Modality

The RAYSCAN α provides a choice between scan ceph and one-shot ceph options. The direct conversion scan ceph offers high-resolution scans, while the one-shot ceph captures top quality images in 0.8 seconds, reducing distortion and radiation exposure to patients.

24/7 Monitoring System

We use an advanced IOT system called RAYGuard to monitor our installed X-ray units. This system significantly reduces the time required to address detected issues. It eliminates the need to visit multiple times to resolve the same issue and makes troubleshooting more efficient.

Specifications

Type	α (P/SC/OCS/OCL) Panoramic, Cephalometric
Patient Positioning	Standing (Wheelchair accessible)
Focal Spot	0.5mm
Tube Current	4~17mA
Tube Voltage	60~90kV

Panoramic

Scan Time	Max. 14sec
-----------	------------

Cephalometric (Option)

Type & Scan Time	SC(Scan Ceph), Min. 4.0sec OCS(One-Shot Ceph Standard), Max. 0.8sec OCL(One-Shot Ceph Large), Max. 0.5sec
------------------	---

Dimension

without SC ceph	1118(L)x1481(W)mm
with SC ceph	1831(L)x1481(W)mm



HQ. 12th Fl. 221, Pangoyeok-ro Seongnam-si, Gyeonggi-do, 13494, Republic of Korea
tel. +82. 031. 605. 1000 email ray_sales@raymedical.co.kr
www.raymedical.com



EC REP Emergo Europe
Westervoortsedijk 60, 6827 AT Arnhem,
The Netherlands